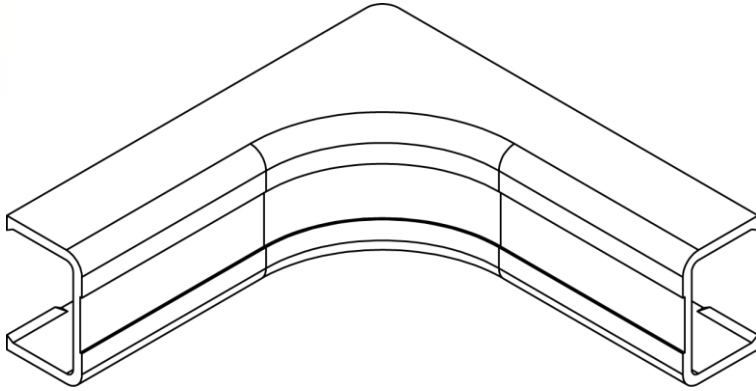


INSIDE CORNER, 3/4"

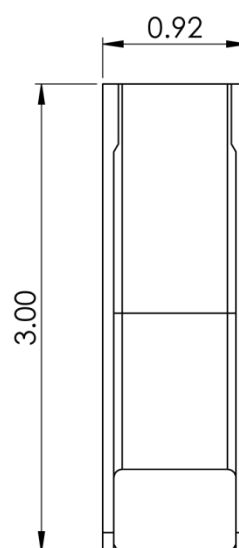
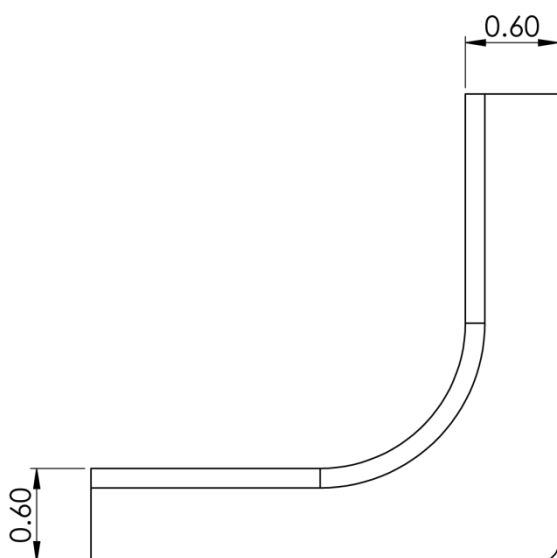
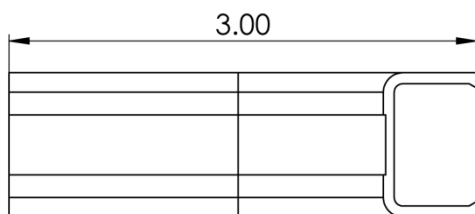
Package Includes

A. 3/4", Inside Corner Cover, **1 Piece.**



Features and Benefits

- Design to maintain cable bend radius
- Accommodates ICRWR118, ICRWR11S, ICRW22R6, and ICRW22R8 3/4"W x 1/2"H raceway sections
- Available in ivory and white.



Specifications

- Material: High impact styrene
- Color: xx: IV-Ivory & WH-White